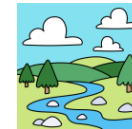


# Rivers

## KNOWLEDGE ORGANISER



ESSENTIAL RIVERS VOCABULARY	
<b>erosion</b>	To process of being worn away by wind or water.
<b>flood</b>	An overflow of a large amount of water.
<b>stream</b>	A small, narrow river.
<b>floodplain</b>	An area of low ground next to a river that often floods.
<b>estuary</b>	The mouth of a large river, where the tide and stream meet.
<b>waterfall</b>	A cascade of water falling from a height.
<b>source</b>	Where a river begins.
<b>irrigation</b>	The supply of water that helps crops to grow, usually using channels.
<b>sediment</b>	The deposits of small stones and dirt that is dragged along by the current.
<b>tributaries</b>	A river or stream flowing into a larger river or lake.
<b>oxbow lake</b>	A curved lake formed from a horseshoe bend in a river.
<b>pollution</b>	The presence of harmful substances in the environment.
<b>transport</b>	Taking or carrying people or goods from one place to another.
<b>capital</b>	The city where the government of the country functions.
<b>trade</b>	Buying and selling goods and services.

**The Thames**

- The Thames flows through London.
- It is 346 km (215 miles) long.
- There are many bridges crossing the Thames.
- Its source is in Kemble.

**The Nile**

- The Nile flows through many African countries.
- It is 6,695 km (4,160 miles) long.
- It is the longest river in the world.
- Its source is in Burundi.

**Cities**

Many cities are built along rivers for various different reasons.

- Easy transport
- Trade with other cities
- Water for drinking, cleaning and cooking
- Source of food (fish)
- More available jobs, such as fishing
- Rivers can irrigate crops

**The Amazon**

- The Amazon flows through many South American countries.
- It is 6,400 km (4,000 miles) long.
- It is the second longest river in the world.
- Its source is in Lago Villafr.

**The Danube**

- The Danube flows through Europe.
- It is 2,872 km (1,785 miles) long.
- Its source is in the Black Forest.

**Fascinating fact!** In Colombia, the plants in the river of Caño Cristales make the water flow blue, red, black, yellow and green! It is known as the River of Five Colours.

**Source and Mouth**

- The source of a river is where it originates. The source is usually found in high places, such as hills or mountains.
- The mouth of a river is where it enters a lake, larger river or the ocean.

**Fascinating fact!** The Nile flows through 11 different countries.

**Longest Rivers in the UK**

- River Severn- 354 km
- River Thames- 346 km
- River Trent- 298 km
- River Wye- 250 km
- River Great Ouse- 23km



**Irrigation**

Ancient civilisations used rivers to irrigate their crops by digging channels from the river to nearby crop fields. The water would either flood the whole field or be directed to flow between rows of plants. This provided the crops with enough water to grow.

**Fascinating fact!** The world's deepest river is the Congo in Central Africa.

**MAKING LINKS TO PREVIOUS LEARNING GOLDEN VOCABULARY**

<b>Plastic pollution</b>	<b>Pollution</b> has negative effects on the environment.
<b>Ancient civilisations</b>	Different civilisations developed means of <b>transport</b> .
<b>London</b>	The River Thames runs through the <b>capital</b> city of London.
<b>Ancient civilisations</b>	Rivers enabled ancient civilisations to <b>trade</b> with others.

**River Pollution**

Water pollution is when waste, chemicals or other particles cause a stream, river, lake or ocean to become harmful to living things that use the water to survive.

Causes of pollution:

- Toxic chemicals from factories
- Oil spills
- Plastic waste
- Sewage
- Animal waste