

# KNOWLEDGE ORGANISER

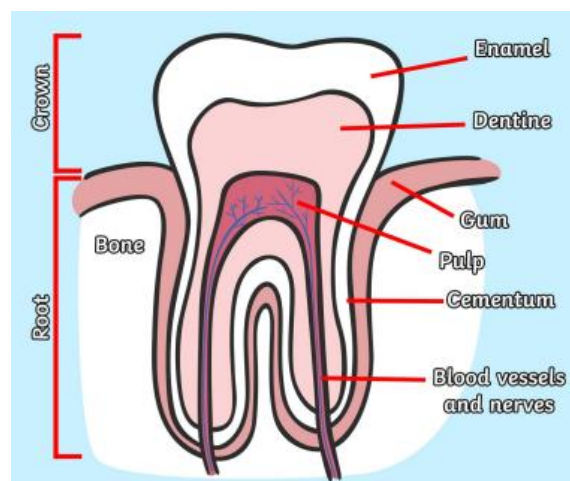
## Science -

## Animals including humans.

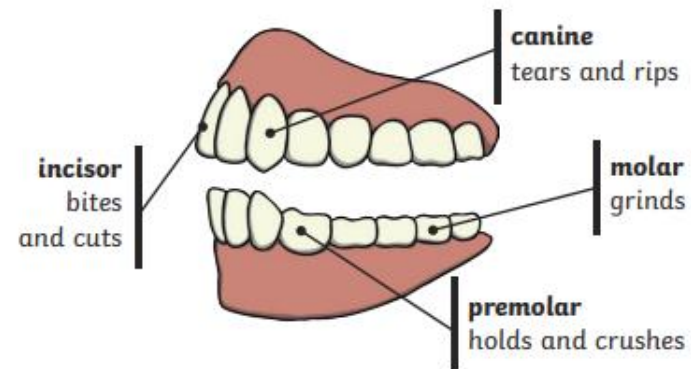
### ESSENTIAL VOCABULARY

<b>digest</b>	Break down food so it can be used by the body.
<b>oesophagus</b>	A muscular tube which moves food from the mouth to the stomach.
<b>stomach</b>	An organ in the digestive system where food is broken down with stomach acid and by being churned around.
<b>small intestine</b>	Part of the intestine where nutrients are absorbed into the body.
<b>large intestine</b>	Part of the intestine where water is absorbed from remaining waste food. Faeces are formed in the large intestine.
<b>rectum</b>	Part of the digestive system where faeces are stored before leaving the body through the anus
<b>teeth</b>	Hard structures in the mouth that help with biting and chewing food.

Diagram of a tooth.

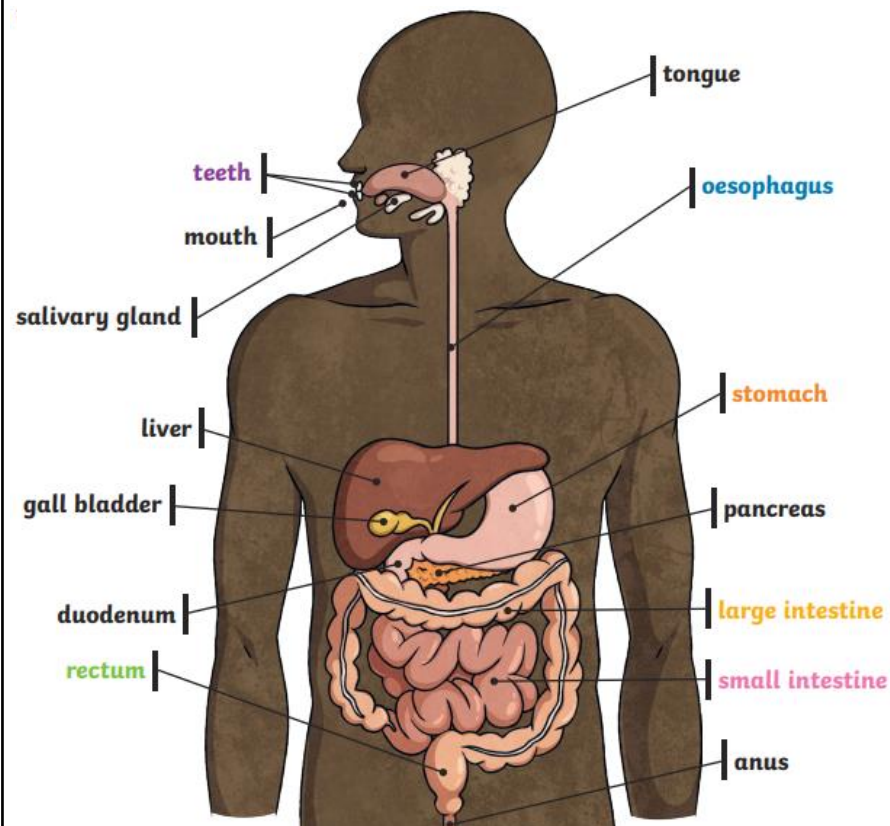


### Human teeth and their functions



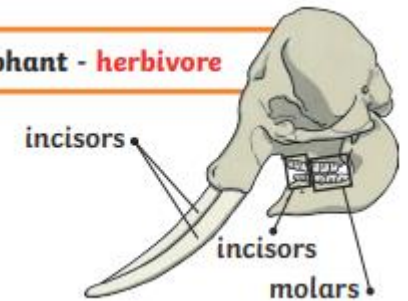
Some people have wisdom teeth but they have no function now.

### The digestive system

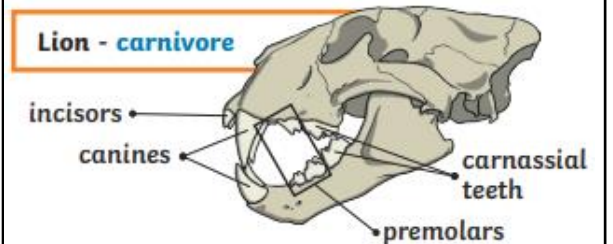


### Different teeth for different foods.

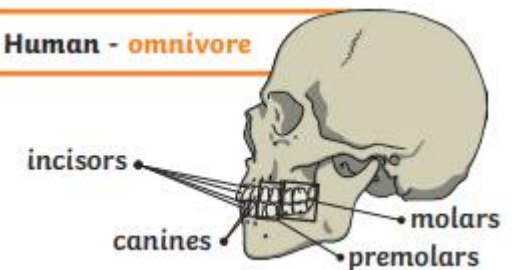
#### Elephant - herbivore



#### Lion - carnivore



#### Human - omnivore



### GOLDEN VOCABULARY

<b>herbivore</b>	An animal that eats plants.
<b>carnivore</b>	An animal that feeds on other animals.
<b>omnivore</b>	An animal that eats plants and animals.

### An example of a food chain

