

Play It – Sing It



Just Like a Roman



Renaissance
1400 - 1600

Baroque
1600 - 1750

Classical
1750 - 1827

Romantic
1820 - 1900

Modern
1890 - 1960

Contemporary
1960 - Present


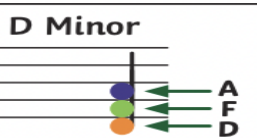
Musical Features

Sections of music can have different types of sound, such as:

| | |
|-----------------|---|
| <i>staccato</i> | When the notes sound short and spiky. |
| <i>legato</i> | When the music sounds smooth and flowing. |

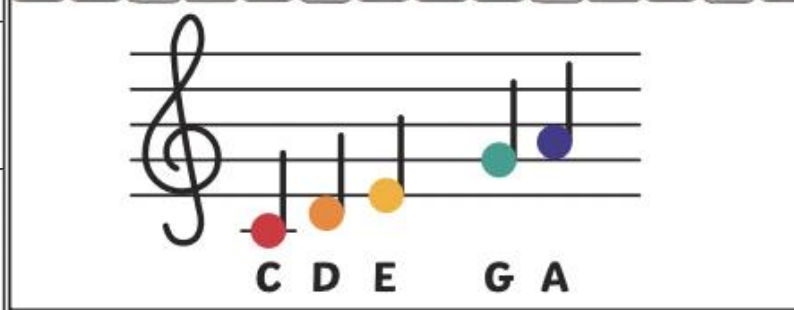
Major and Minor Chords

A chord is a group of notes played together to create a musical effect.

| | |
|--|---|
| <p>C Major</p>  | When a chord sounds bright and happy it is usually a major chord. |
| <p>D Minor</p>  | When a chord sounds sad or spooky it is usually a minor chord. |

Pentatonic Scale

This is a **scale** made of five notes, such as C, D, E, G, A. It is often used in folk music.



Elements of Music

Pitch – How high or low a note sounds

Duration – How long or short a note is

Dynamics – How loud or quiet a piece of music is played

Silence – The gaps, rests and breaks in a piece of music

Structure – Overall plan of a piece of music

Tempo – How fast or slow the music is

Timbre – Sound quality of an instrument or voice

Texture – The effect of melodies and harmonies together.

Performing Together

| | |
|--------------------------|---|
| round | A song in which two, three or four groups sing the same melody but starting at different times. The overlapping parts create harmony. |
| partner song | A song made by combining two or more complete melodies that could be sung separately. |
| melody and accompaniment | A melody which has another line of music played with it. |
| duet | A piece of music or song that is performed by two people. Each performer in a duet is equally important. |

Singing

| | |
|--------------------|--|
| <i>crescendo</i> | When a composer wants music to get louder, they might use a symbol like this. |
| <i>decrescendo</i> | When a composer wants music to get quieter, they might use a symbol like this. Another name for this symbol is diminuendo. |