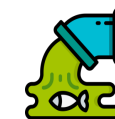
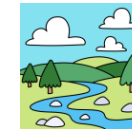




Rivers

KNOWLEDGE ORGANISER




ESSENTIAL RIVERS VOCABULARY

erosion	To process of being worn away by wind or water.
flood	An overflow of a large amount of water.
stream	A small, narrow river.
meander	When water flows in a curvy, bendy path, like a snake.
estuary	The mouth of a large river, where the tide and stream meet.
waterfall	A cascade of water falling from a height.
source	Where a river begins.
downstream	The direction that the water in a river flows.
sediment	The deposits of small stones and dirt that is dragged along by the current.
tributaries	A river or stream flowing into a larger river or lake.
Lower course	Where the river flows into another body of water, like the sea or another river.
Middle course	The second stage of a river, where the land is flatter and the river wider
Upper course	The section at the beginning of the river, nearest the source.
pollution	The presence of harmful substances in the environment.

The Thames

- The Thames flows through London.
- It is 346 km (215 miles) long.
- There are many bridges crossing the Thames.
- Its source is in Kemble.




The Blackwater

The name derives from a discharge from a textile works at Bocking which once turned the river black. From Braintree the river meanders its way through Coggeshall, Kelvedon and Witham, where it meets the River Brain, and on to Maldon.

Source and Mouth

- The source of a river is where it originates. The source is usually found in high places, such as hills or mountains.
- The mouth of a river is where it enters a lake, larger river or the ocean.




Cities

Many cities are built along rivers for various different reasons.

- Easy transport
- Trade with other cities
- Water for drinking, cleaning and cooking
- Source of food (fish)
- More available jobs, such as fishing
- Rivers can irrigate crops

Fascinating fact!

In Colombia, the plants in the river of Caño Cristales make the water flow blue, red, black, yellow and green! It is known as the River of Five Colours.




Fascinating fact!

The Nile flows through 11 different countries.

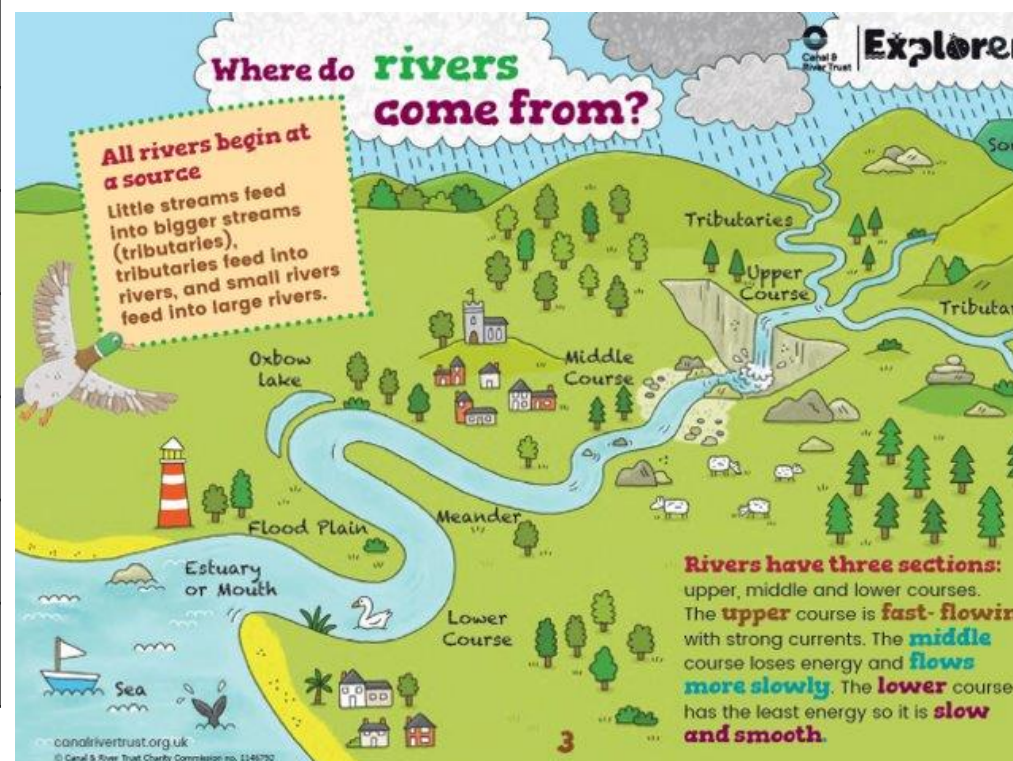
Longest Rivers in the UK

- River Severn- 354 km
- River Thames- 346 km
- River Trent- 298 km
- River Wye- 250 km
- River Great Ouse- 23km



Fascinating fact!

The world's deepest river is the Congo in Central Africa.



River Pollution

Water pollution is when waste, chemicals or other particles cause a stream, river, lake or ocean to become harmful to living things that use the water to survive.

Causes of pollution:

- Toxic chemicals from factories
- Oil spills
- Plastic waste
- Sewage
- Animal waste

